

Annual Report

of

Occupational Injuries and Illnesses

2019

Prepared by

Mississippi Workers' Compensation Commission

P. O. Box 5300

Jackson, Mississippi 39296-5300

(601) 987-4200

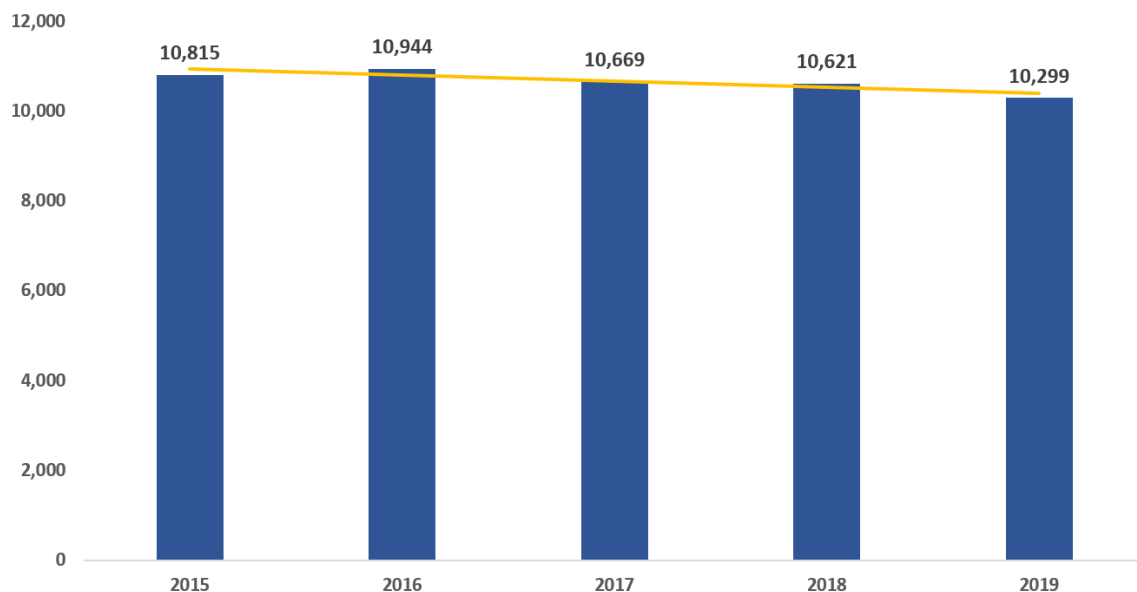
Table of Contents

Statistical Highlights	1
Injuries/Illnesses By Industry... ..	2
Injuries/Illnesses Industry Breakdown.	3-4
Injuries/Illnesses By Gender.....	5
Death Claims by Cause.....	5
Injuries/Illnesses By Nature	6
Injuries/Illnesses By Part Of Body	7
Injuries/Illnesses By Cause	8
Injuries/Illnesses By Month.....	9
Injuries/Illnesses By Day	9
Injuries/Illnesses By County of Occurrence.....	10
Statistics Associated With Self-Insured Employers	11

2019 STATISTICAL HIGHLIGHTS

- There were 10,299 claims filed in 2019.
- There were 2,470 claims controverted in 2019.
- Hinds County had the most occurrence of injuries with a total of 1,217 claims. Harrison County followed with 713 claims.
- Females were reported less frequently with 4,304 claims (41.8%).
- Major injuries or illnesses occurred on Wednesday, with 1,920 claims.
- The largest number of claims were reported in May with 964 claims or 9.4%. October followed with 951 claims or 9.2%.
- Strains were the leading nature of injury with 3,303 claims or 32.1%.
- The lower back was the part of the body with the highest occurrence of injuries totaling 1,164 claims or 11.3%. Claims for multiple body parts followed with a total of 1,156 claims or 11.2%.
- The leading cause of injury was lifting, with a total of 1,058 claims or 10.3%. Falls, slips, and trips followed with 1,015 claims or 9.9%.
- There were 72 fatalities reported in 2019.
- There were 7,686 claims received from Insurance carriers and 2,564 claims were received from Self-Insured employers.

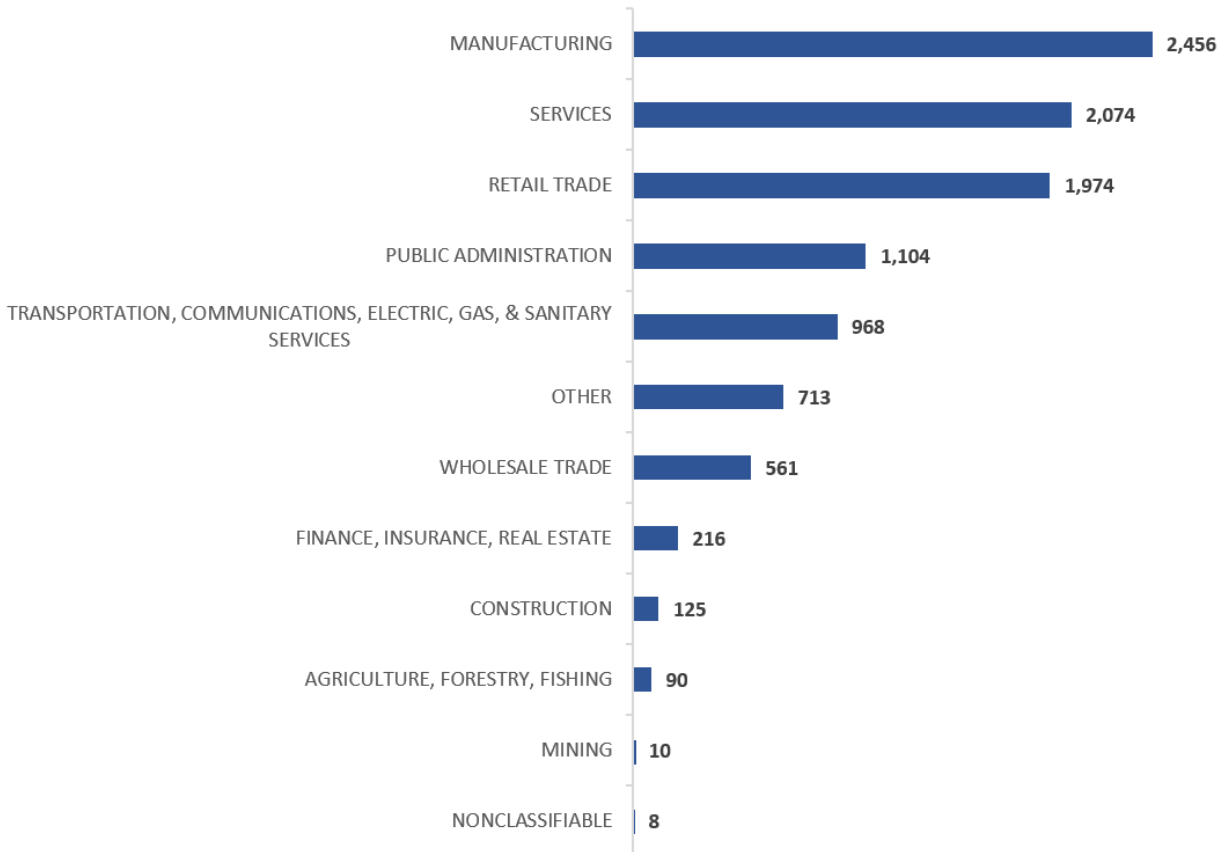
NUMBER OF CLAIMS FILED FOR THE LAST FIVE YEARS



INJURIES/ILLNESSES BY INDUSTRY 2019

INDUSTRY	NUMBER	PERCENT
AGRICULTURE, FORESTRY, FISHING	90	0.87%
MINING	10	0.10%
CONSTRUCTION	125	1.21%
MANUFACTURING	2,456	23.85%
TRANSPORTATION, COMMUNICATIONS, ELECTRIC, GAS, & SANITARY SERVICES	968	9.40%
WHOLESALE TRADE	561	5.45%
RETAIL TRADE	1,974	19.17%
FINANCE, INSURANCE, REAL ESTATE	216	2.10%
SERVICES	2,074	20.14%
PUBLIC ADMINISTRATION	1,104	10.72%
NONCLASSIFIABLE	8	0.08%
OTHER	713	6.92%
Total	10,299	100.00%

INJURIES/ILLNESSES BY INDUSTRY 2019



INJURIES/ILLNESSES BY INDUSTRY BREAKDOWN 2019

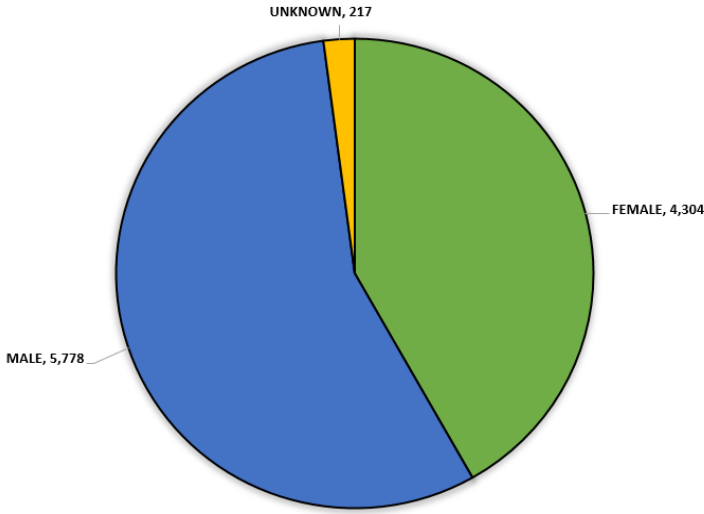
CATEGORY	NUMBER	PERCENT
AGRICULTURE, FORESTRY, FISHING		
AGRICULTURE, FISHING, HUNTING, FORESTRY, LIVESTOCK	90	0.87%
MINING		
MINING, METAL, COAL, OIL & GAS	10	0.10%
CONSTRUCTION		
HEAVY BUILDING CONSTRUCTION/GENERAL CONTRACTORS AND SPECIAL TRADE	125	1.21%
MANUFACTURING		
FOOD PRODUCTS, LEATHER, FURNITURE, LUMBER, WOOD, TEXTILE MILL	1,093	10.61%
STONE, CLAY, GLASS, AND CONCRETE PRODUCTS	215	2.09%
PRIMARY METAL INDUSTRIES	544	5.28%
FABRICATED METAL PRODUCTS, EXCEPT MACHINERY AND TRANSPORTATION EQUIPMENT	49	0.48%
INDUSTRIAL AND COMMERCIAL MACHINERY AND COMPUTER EQUIPMENT	41	0.40%
ELECTRONIC AND OTHER ELECTRICAL EQUIPMENT AND COMPONENTS, EXCEPT COMPUTER EQUIPMENT	154	1.50%
TRANSPORTATION EQUIPMENT	339	3.29%
MEASURING, ANALYZING, AND CONTROLLING INSTRUMENTS, PHOTOGRAPHIC, MEDIAL AND OPTICAL	8	0.08%
MISCELLANEOUS MANUFACTURING INDUSTRIES	13	0.13%
TRANSPORTATION, COMMUNICATIONS, ELECTRIC, GAS, & SANITARY SERVICES		
RAILROAD, LOCAL/SUB TRANSIT, MOTOR FREIGHT/WAREHOUSING	368	3.57%
WATER TRANSPORTATION/TRANSPORTATION BY AIR	122	1.18%
PIPELINES, EXCEPT NATURAL GAS	2	0.02%
TRANSPORTATION SERVICES	8	0.08%
COMMUNICATIONS	295	2.86%
ELECTRIC, GAS, AND SANITARY SERVICES	173	1.68%
WHOLESALE TRADE		
WHOLESALE TRADE -DURABLE/NON-DURABLE GOODS	561	5.45%
RETAIL TRADE		
BUILDING MATERIALS, STORES, FURNISHING, AUTOMOTIVE, MISC. RETAIL	1974	19.17%
FINANCE, INSURANCE, REAL ESTATE		
DEPOSITORY, INSURANCE AGENTS/BROKER, INVESTMENTS	216	2.10%

INJURIES/ILLNESSES BY INDUSTRY BREAKDOWN 2019

CATEGORY	NUMBER	PERCENT
SERVICES		
HOTELS, ROOMING HOUSE, CAMPS, AND OTHER LODGING PLACES	160	1.55%
PERSONAL SERVICES	48	0.47%
BUSINESS SERVICES	333	3.23%
AUTOMOTIVE REPAIR, SERVICES AND PARKING, MISC. REPAIR	22	0.21%
MOTION PICTURES	1	0.01%
AMUSEMENT AND RECREATION SERVICES	3	0.03%
HEALTH SERVICES, SPECIALTY OUTPATIENT	702	6.82%
LEGAL SERVICES	45	0.44%
ELEMENTARY AND SECONDARY SCHOOL	420	4.08%
COLLEGES, UNIVERSITIES, PROFESSIONAL SCHOOLS	196	1.90%
JUNIOR COLLEGES AND TECHNICAL INSTITUTES	6	0.06%
SOCIAL SERVICES, CHILD DAY CARE, RESIDENTIAL CARE	54	0.52%
MEMBERSHIP ORGANIZATION	25	0.24%
ENGINEERING, ACCOUNTING, RESEARCH MANAGEMENT, AND RELATED SERVICES	57	0.55%
MISCELLANEOUS SERVICES, NOT ELSEWHERE CLASSIFIED	2	0.02%
PUBLIC ADMINISTRATION		
EXECUTIVE, LEGISLATIVE, GENERAL GOVERNMENT EXCEPT FINANCE	767	7.45%
COURTS	158	1.53%
PUBLIC ORDER & SAFETY, POLICE, AND FIRE, CORRECTIONAL	167	1.62%
ADMINISTRATION OF HUMAN RESOURCE PROGRAM	2	0.02%
ADMINISTRATION OF ENVIRONMENTAL QUALITY AND HOUSING PROGRAM	3	0.03%
ADMINISTRATION OF ECONOMIC PROGRAMS	7	0.07%
NONCLASSIFIABLE		
NONCLASSIFIABLE ESTABLISHMENTS	8	0.08%
OTHER		
INVALID INDUSTRY CODE	713	6.92%
TOTAL	10,299	100.00%

INJURIES/ILLNESSES BY GENDER 2019

INJURIES/ILLNESSES BY GENDER

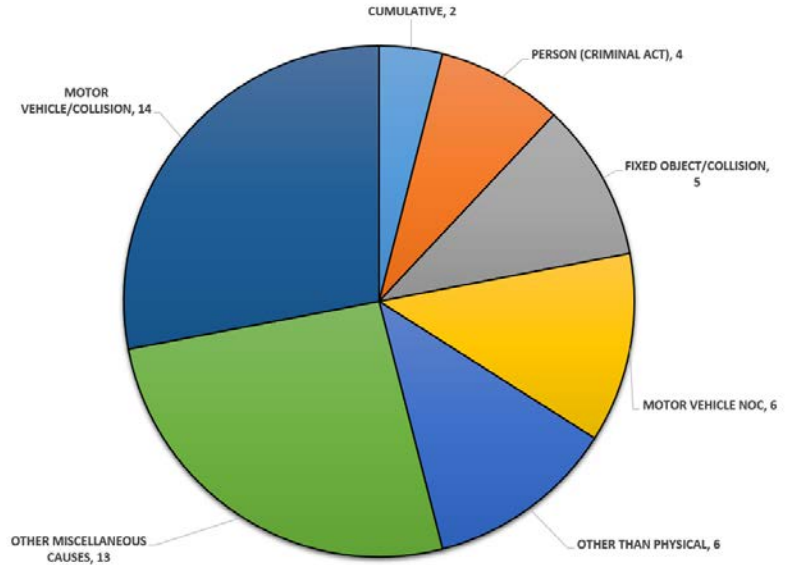


GENDER	NUMBER	PERCENT
FEMALE	4,304	41.79%
MALE	5,778	56.10%
UNKNOWN	217	2.11%
TOTAL	10,299	100.00%

INJURIES/ILLNESSES RESULTING IN DEATH LISTED BY CAUSE 2019

DESCRIPTION	NUMBER	PERCENT
DUST, GAS, FUMES	1	1.39%
MACHINERY	1	1.39%
COLLAPSING MATERIALS	1	1.39%
FALL/SLIP DIFFERENT LEVEL	1	1.39%
FALL/SLIP ON SAME LEVEL	1	1.39%
SLIPPED, DID NOT FALL	2	2.78%
FALL/SLIP/TRIP NOC	1	1.39%
MOTOR VEHICLE/COLLISION	14	19.44%
FIXED OBJECT/COLLISION	5	6.94%
VEHICLE UPSET	1	1.39%
MOTOR VEHICLE NOC	6	8.33%
STRAIN/INJURY NOC	2	2.78%
PERSON(NOT IN ACT OF CRIME)	1	1.39%
STRUCK/INJURY BY FALLING OBJECT	1	1.39%
MOTOR VEHICLE	2	2.78%
STRUCK/INURED BY NOC	1	1.39%
ABSORPTION/INGESTION/INHALATION	1	1.39%
ELECTRICAL CURRENT	2	2.78%
ANIMAL OR INSECT	2	2.78%
EXPLOSION/FLARE BACK	1	1.39%
PERSON (CRIMINAL ACT)	4	5.56%
OTHER THAN PHYSICAL	6	8.33%
CUMULATIVE (ALL OTHER)	2	2.78%
OTHER MISCELLANEOUS CAUSES	13	18.06%
TOTAL	72	100.00%

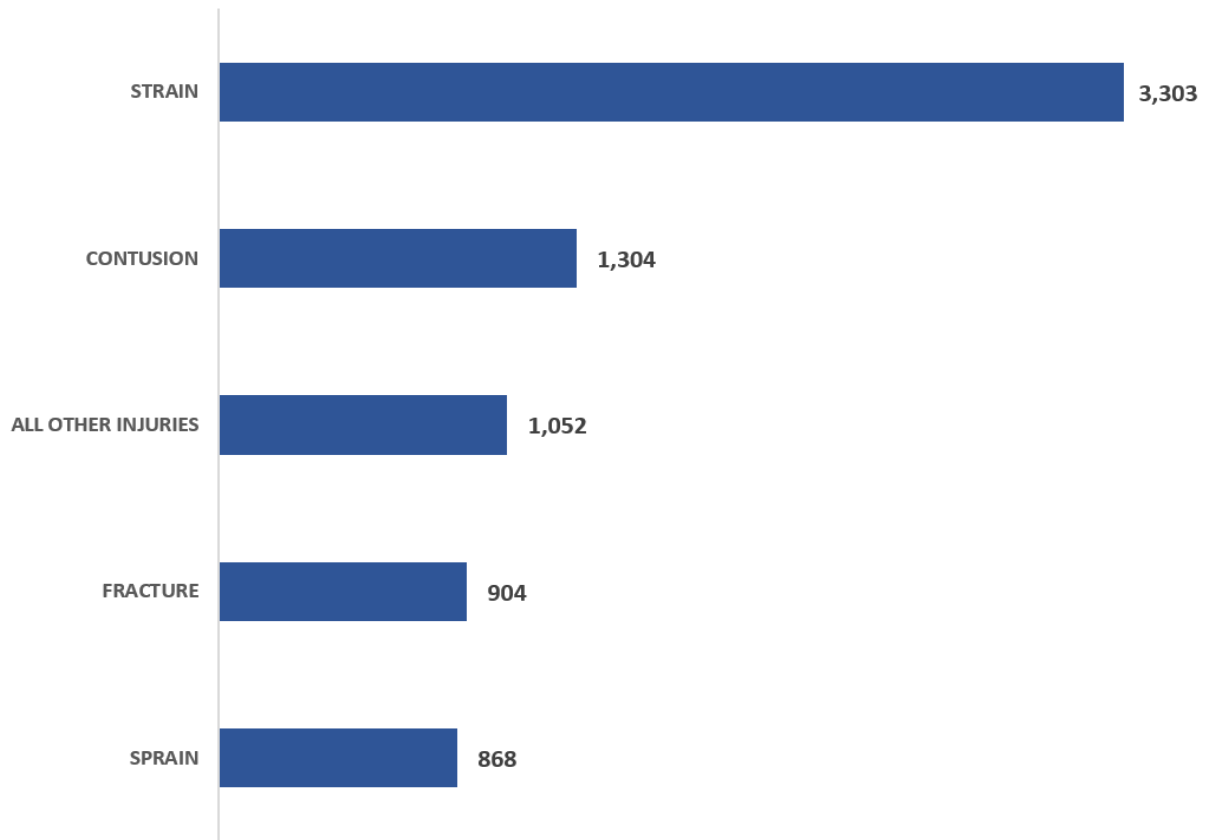
TOP 7 CAUSES OF DEATH 2019



INJURIES/ILLNESSES BY NATURE OF INJURY 2019

DESCRIPTION	NUMBER	PERCENT	DESCRIPTION	NUMBER	PERCENT
NO PHYSICAL INJURY	127	1.23%	SEVERANCE	9	0.09%
AMPUTATION	67	0.65%	SPRAIN	868	8.43%
ANGINA PECTORIS	5	0.05%	STRAIN	3,303	32.07%
BURN	165	1.60%	SWOON, FAINT	70	0.68%
CONCUSSION	60	0.58%	ASPHYXIATION	2	0.02%
CONTUSION	1,304	12.66%	VASCULAR LOSS	12	0.12%
CRUSHING	180	1.75%	VISION LOSS	5	0.05%
DISLOCATION	140	1.36%	ALL OTHER INJURIES	1,052	10.21%
ELECTRIC SHOCK	8	0.08%	DUST DISEASE	1	0.01%
FOREIGN BODY	46	0.45%	RESPIRATORY DISORDER, GAS, FUMES	28	0.27%
FRACTURE	904	8.78%	POISONING - CHEMICAL (NON METAL)	4	0.04%
FREEZING	3	0.03%	DERMATITIS	38	0.37%
HEARING LOSS/TRAUMATIC	5	0.05%	MENTAL DISORDER	10	0.10%
HEAT PROSTRATION	29	0.28%	ALL OTHER OCC. DISEASE	26	0.25%
HERNIA	106	1.03%	LOSS OF HEARING	2	0.02%
INFECTION	31	0.30%	CONTAGIOUS DISEASE	3	0.03%
INFLAMMATION	377	3.66%	MENTAL STRESS	38	0.37%
LACERATION	539	5.23%	CARPAL TUNNEL SYNDROME	93	0.90%
MYOCARDIAL INFARCTION	12	0.12%	ALL OTHER CUMULATIVE INJURY	86	0.84%
POISONING - GENERAL	7	0.07%	MULTIPLE INJURY - PHYSICAL ONLY	370	3.59%
PUNCTURE	91	0.88%	MULTIPLE INJURY - PHYSICAL & MENTAL	15	0.15%
RUPTURE	58	0.56%	TOTAL	10,299	100.00%

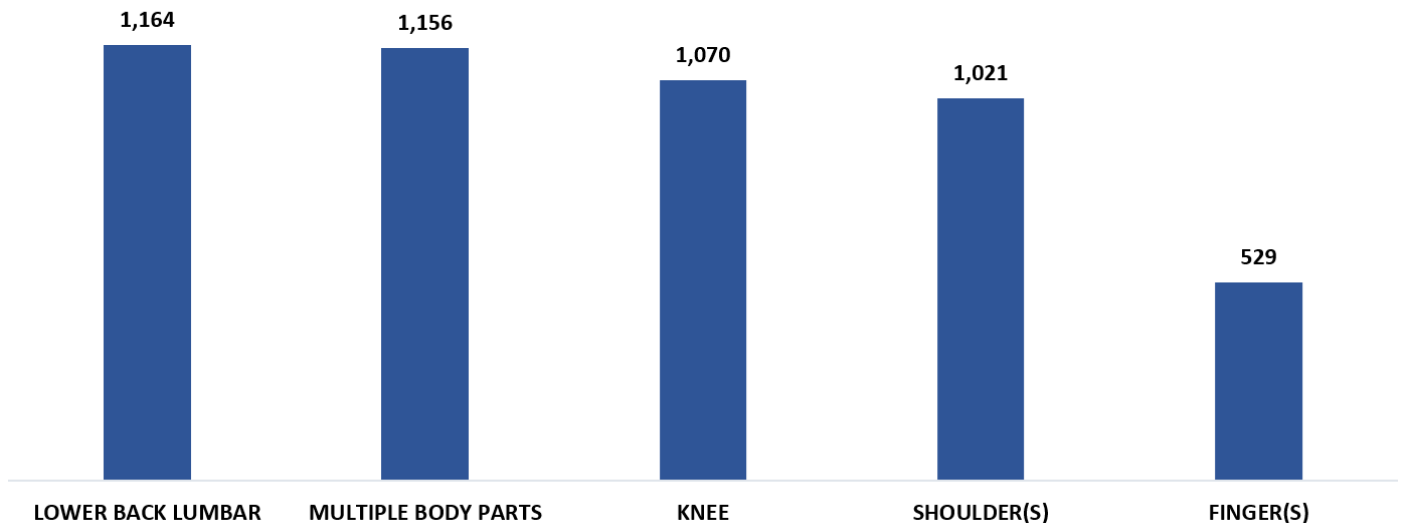
TOP FIVE OCCURRENCES OF INJURY BY NATURE 2019



INJURIES/ILLNESSES BY PART OF THE BODY AFFECTED 2019

DESCRIPTION	NUMBER	PERCENT	DESCRIPTION	NUMBER	PERCENT
MULTIPLE HEAD INJURY	165	1.60%	LOWER BACK LUMBAR	1,164	11.30%
SKULL	42	0.41%	DISC (TRUNK)	65	0.63%
BRAIN	41	0.40%	CHEST-RIBS, STERNUM	106	1.03%
EAR(S)	13	0.13%	SACRUM AND COCCYX	9	0.09%
EYES(S)	111	1.08%	PELVIS	19	0.18%
NOSE	18	0.17%	SPINAL CORD - TRUNK	4	0.04%
TEETH	12	0.12%	INTERNAL ORGANS	32	0.31%
MOUTH	19	0.18%	HEART	24	0.23%
OTHER SOFT TISSUE	106	1.03%	MULTIPLE LOW EXTREMITIES	192	1.86%
FACIAL BONES	23	0.22%	HIP	99	0.96%
MULTIPLE NECK INJURY	83	0.81%	THIGH	62	0.60%
VERTEBRAE	16	0.16%	KNEE	1,070	10.39%
DISK(NECK)	15	0.15%	LOWER LEG	284	2.76%
SPINAL CORD - NECK	8	0.08%	ANKLE	489	4.75%
SOFT TISSUE	70	0.68%	FOOT	445	4.32%
TRACHEA	1	0.01%	TOE(S)	63	0.61%
MULTIPLE UPPER EXTREMITIES	235	2.28%	GREAT TOE	37	0.36%
UPPER ARM	181	1.76%	LUNG	27	0.26%
ELBOW	169	1.64%	ABDOMEN (INC. GROIN)	189	1.84%
LOWER ARM	239	2.32%	BUTTOCKS	12	0.12%
WRIST	374	3.63%	TRUNK VERTEBRAE	25	0.24%
HAND	476	4.62%	ARTIFICIAL APPLIANCE	4	0.04%
FINGER(S)	529	5.14%	INSUFFICIENT INFO	106	1.03%
THUMB	152	1.48%	NO PHYSICAL INJURY	127	1.23%
SHOULDER(S)	1,021	9.91%	MULTIPLE BODY PARTS	1,156	11.22%
WRIST(S) & HANDS(S)	77	0.75%	BODY SYSTEMS & MULTIPLE	96	0.93%
MULTIPLE TRUNK	36	0.35%	WHOLE BODY	30	0.29%
UPPER BACK-THORACIC	131	1.27%	TOTAL	10,299	100.00%

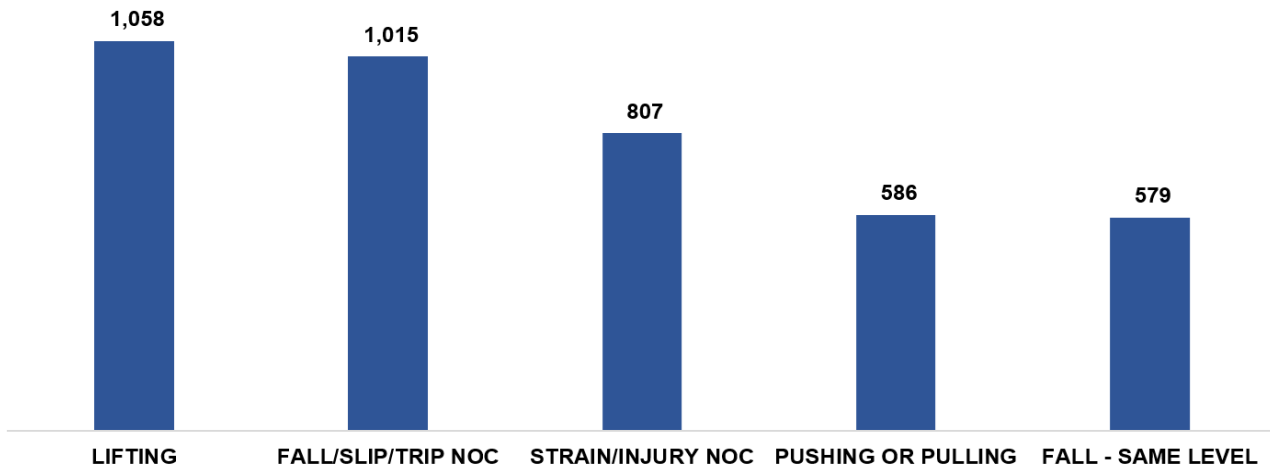
TOP FIVE PARTS OF THE BODY AFFECTED BY INJURIES 2019



INJURIES/ILLNESSES BY CAUSE OF INJURY 2019

DESCRIPTION	NUMBER	PERCENT	DESCRIPTION	NUMBER	PERCENT
CHEMICALS	33	0.32%	HOLDING OR CARRYING	75	0.73%
CONTACT HOT OBJECT OR SUBSTANCE	47	0.46%	LIFTING	1,058	10.27%
TEMPERATURE EXTREMES	31	0.30%	PUSHING OR PULLING	586	5.69%
FIRE OR FLAME	16	0.16%	REACHING	108	1.05%
STEAM OR HOT FLUIDS	43	0.42%	USING TOOL OR MACHINE	81	0.79%
DUST, GAS, FUMES	21	0.20%	STRAIN/INJURY NOC	807	7.84%
WELDING OPERATIONS	3	0.03%	WIELDING/THROWING	9	0.09%
CONTACT WITH NOC	45	0.44%	STRIKING/STEPPING ON MOVING PARTS	8	0.08%
MACHINERY	145	1.41%	LIFTED/HANDLED OBJECT	34	0.33%
OBJECT HANDLED	116	1.13%	SAND, SCRAP, CLEAN OPERATIONS	2	0.02%
CAUGHT IN/BETWEEN NOC	224	2.17%	STATIONARY OBJECT	117	1.14%
CUTS/SCRAPE BY BROKEN GLASS	6	0.06%	STEP ON SHARP OBJECT	12	0.12%
HAND TOOL, NOT POWERED	54	0.52%	STRIKE AGAINST/STEP ON NOC	80	0.78%
OBJECT BEING LIFTED OR HANDLED	154	1.50%	PERSON (NOT IN ACT OF CRIME)	251	2.44%
POWERED HAND TOOL	80	0.78%	STRUCK/INJURED BY FALLING OBJECT	301	2.92%
CUT/PUNCTURE/SCRAPE NOC	171	1.66%	HAND TOOL/MACHINE IN USE	91	0.88%
COLLAPSING MATERIALS	2	0.02%	MOTOR VEHICLE	123	1.19%
FALL/SLIP DIFFERENT LEVEL	298	2.89%	MACHINE MOVING PARTS	36	0.35%
FROM LADDER, SCAFFOLD	142	1.38%	LIFTED OR HANDLED OBJECT	202	1.96%
FROM LIQUID OR GREASE SPILLS	192	1.86%	OBJECT HANDLED BY OTHERS	33	0.32%
INTO OPENING	54	0.52%	STRUCK/INJURED BY NOC	276	2.68%
ON SAME LEVEL	579	5.62%	ABSORPTION/INGESTION/INHALATIONS	56	0.54%
SLIPPED, DID NOT FALL	94	0.91%	ELECTRICAL CURRENT	8	0.08%
FALL/SLIP/TRIP NOC	1,015	9.86%	ANIMAL OR INSECT	70	0.68%
ON ICE OR SNOW	23	0.62%	EXPLOSION/FLARE BACK	7	0.07%
ON STAIRS	119	1.09%	FOREIGN BODY IN EYE	32	0.31%
MOTOR VEHICLE COLLISION	286	2.78%	PERSON (CRIMINAL ACT)	77	0.75%
FIXED OBJECT/COLLISION	44	0.43%	OTHER THAN PHYSICAL	148	1.44%
AIRPLANE CRASH	3	0.03%	GUNSHOT	1	0.01%
VEHICLE UPSET	51	0.50%	REPETITIVE MOTION	424	4.18%
MOTOR VEHICLE NOC	225	2.18%	RUBBED/ABRADED NOC	7	0.07%
CONTINUAL NOISE	4	0.04%	CUMULATIVE ALL OTHERS	128	1.24%
TWISTING	247	2.40%	OTHER MISC. CAUSES	449	4.36%
JUMPING	35	0.34%	TOTAL	10,299	100.00%

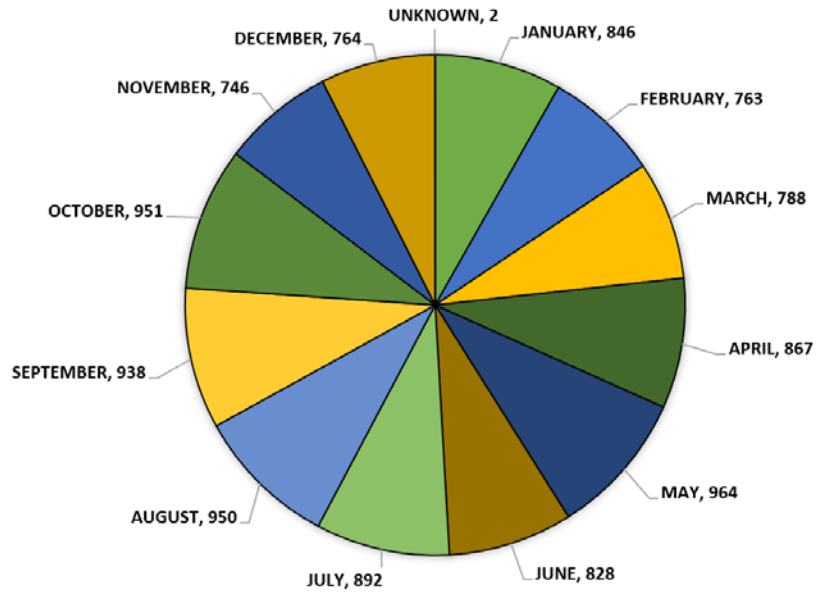
TOP FIVE CAUSES OF INJURIES 2019



INJURIES/ILLNESSES BY MONTH 2019

MONTH	NUMBER	PERCENT
JANUARY	846	8.21%
FEBRUARY	763	7.41%
MARCH	788	7.65%
APRIL	867	8.42%
MAY	964	9.36%
JUNE	828	8.04%
JULY	892	8.66%
AUGUST	950	9.22%
SEPTEMBER	938	9.11%
OCTOBER	951	9.23%
NOVEMBER	746	7.24%
DECEMBER	764	7.42%
UNKNOWN	2	0.02%
TOTAL	10,299	100.00%

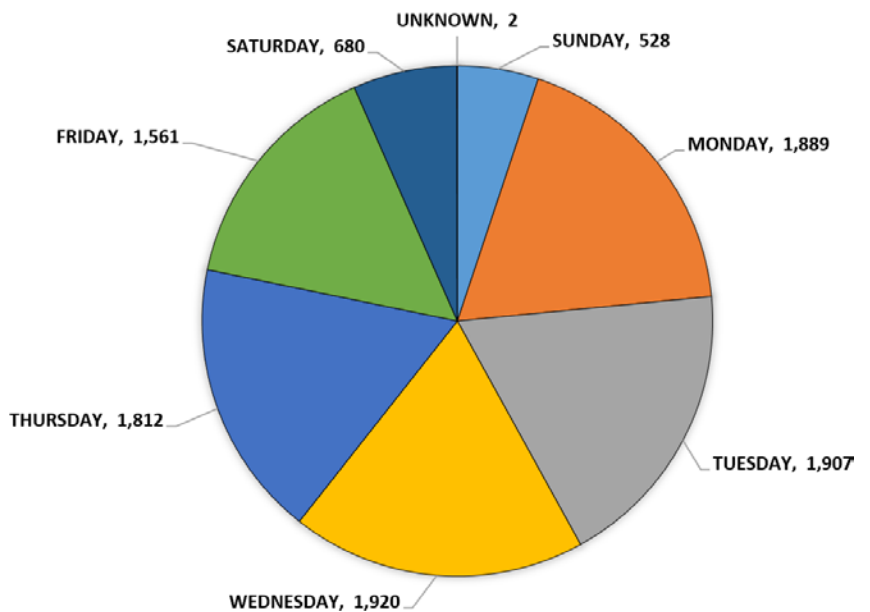
NUMBER OF INJURIES/ILLNESSES BY MONTH 2019



INJURIES/ILLNESSES BY DAY 2019

DAY	NUMBER	PERCENT
SUNDAY	528	5.13%
MONDAY	1,889	18.34%
TUESDAY	1,907	18.52%
WEDNESDAY	1,920	18.64%
THURSDAY	1,812	17.59%
FRIDAY	1,561	15.16%
SATURDAY	680	6.84%
UNKNOWN	2	0.02%
TOTAL	10,299	100.00%

NUMBER OF INJURIES/ILLNESSES BY DAY 2019



INJURIES/ILLNESSES BY COUNTY 2019

DESCRIPTION	NUMBER	PERCENT
ADAMS	89	0.86%
ALCORN	91	0.88%
AMITE	17	0.17%
ATTALA	52	0.50%
BENTON	9	0.09%
BOLIVAR	94	0.91%
CALHOUN	26	0.25%
CARROLL	8	0.08%
CHICKASAW	67	0.65%
CHOCTAW	12	0.12%
CLAIBORNE	25	0.24%
CLARKE	22	0.21%
CLAY	45	0.44%
COAHOMA	62	0.60%
COPIAH	101	0.98%
COVINGTON	59	0.57%
DESOTO	700	6.80%
FORREST	360	3.50%
FRANKLIN	7	0.07%
GEORGE	27	0.26%
GREENE	6	0.06%
GRENADA	73	0.71%
HANCOCK	121	1.17%
HARRISON	713	6.92%
HINDS	1,217	11.82%
HOLMES	45	0.44%
HUMPHREYS	25	0.24%
ITAWAMBA	99	0.96%
JACKSON	238	2.31%
JASPER	37	0.36%
JEFFERSON	18	0.17%
JEFFERSON DAVIS	15	0.15%
JONES	297	2.88%
KEMPER	12	0.12%
LAFAYETTE	155	1.51%
LAMAR	32	0.31%
LAUDERDALE	261	2.53%
LAWRENCE	29	0.28%
LEAKE	37	0.36%
LEE	421	4.09%
LEFLORE	100	0.97%
LINCOLN	141	1.37%

DESCRIPTION	NUMBER	PERCENT
LOWNDES	197	1.91%
MADISON	630	6.12%
MARION	46	0.45%
MARSHALL	106	1.03%
MONROE	65	0.63%
MONTGOMERY	24	0.23%
NESHOBA	109	1.06%
NEWTON	54	0.52%
NOXUBEE	32	0.31%
OKTIBBEHA	153	1.49%
PANOLA	97	0.94%
PEARL RIVER	93	0.90%
PERRY	26	0.25%
PIKE	138	1.34%
PONTOTOC	131	1.27%
PRENTISS	27	0.26%
QUITMAN	4	0.04%
RANKIN	474	4.60%
SCOTT	116	1.13%
SHARKEY	5	0.05%
SIMPSON	49	0.48%
SMITH	14	0.14%
STONE	32	0.31%
SUNFLOWER	68	0.66%
TALLAHATCHIE	25	0.24%
TATE	52	0.50%
TIPPAH	84	0.82%
TISHOMINGO	48	0.47%
TUNICA	57	0.55%
UNION	314	3.05%
WALTHALL	18	0.17%
WARREN	180	1.75%
WASHINGTON	122	1.18%
WAYNE	37	0.36%
WEBSTER	22	0.21%
WILKINSON	39	0.38%
WINSTON	49	0.48%
YALOBUSHA	26	0.25%
YAZOO	54	0.52%
OUT OF STATE	514	4.99%
UNKNOWN	3	0.03%
TOTAL	10,299	100.00%

Hinds County was the county with the highest number of occurrences with 1,217 claims.

Harrison County followed with 713 claims and DeSoto County had 700 claims.

CONTROVERTED CASES ASSOCIATED WITH SELF-INSURED

2019 STATISTICS ASSOCIATED WITH SELF-INSURED EMPLOYERS

